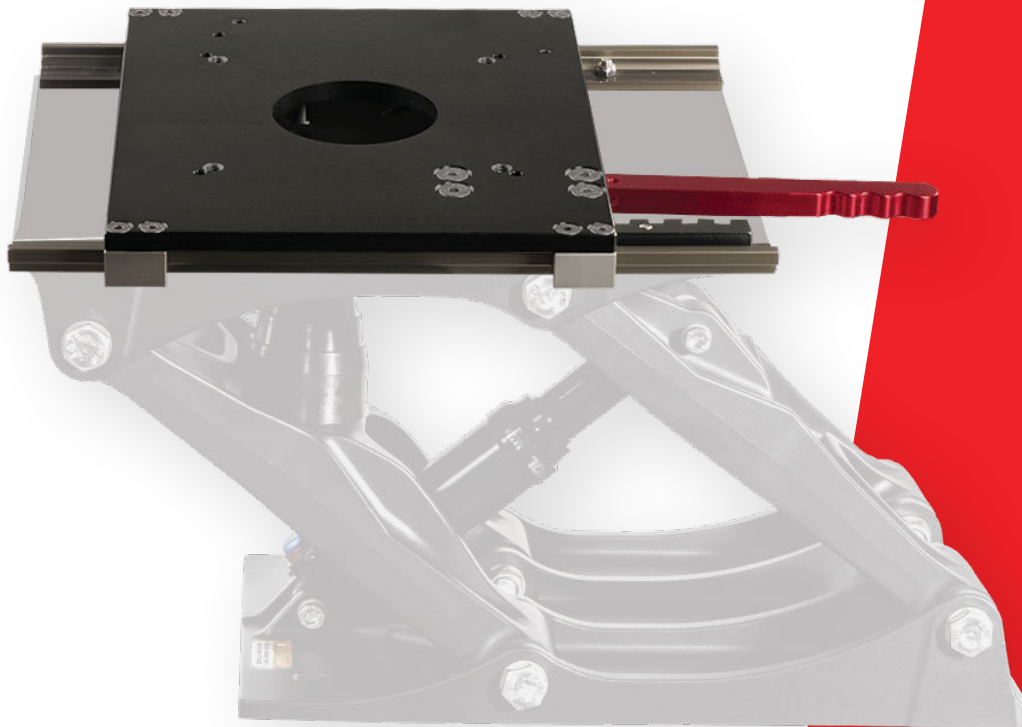


# SHOCKWAVE

SHOCKWAVE <sup>S5</sup>  
**SENTINEL**

SHOCKWAVE <sup>S5</sup>  
**SENTINEL** | **SLIDE**  
SW-05489

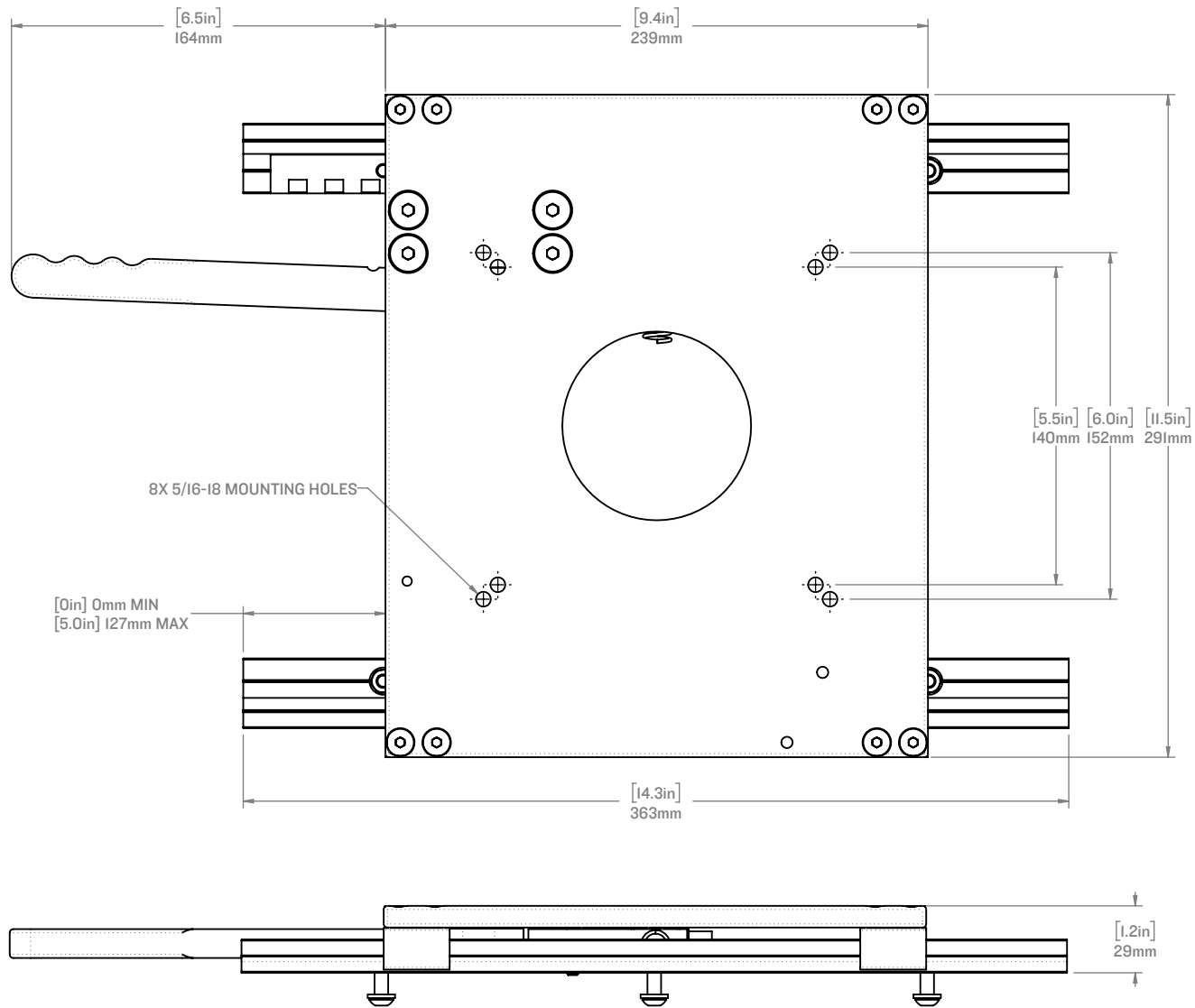


Our purpose-built Slide offers a full 5-inches of fore-aft travel, allowing for comfortable seating options for a wide variety of occupants and users. Our Slide pairs perfectly with the S5 Sentinel and the Commander Seat.

LEARN MORE ABOUT OUR PRODUCTS AT  
**SHOCKWAVESEATS.COM**

+1-778-426-8545  
sales@shockwavedseats.com

\*DRAWING DOES NOT SHOW PACKAGING MATERIAL



**SHOCKWAVE**

FOR MORE INFORMATION  
CALL US AT 1-778-426-8545  
OR VISIT US ONLINE AT  
[WWW.SHOCKWAVESEATS.COM](http://WWW.SHOCKWAVESEATS.COM)

**PROPRIETARY AND CONFIDENTIAL**

NOTICE: THIS DRAWING MAY REVEAL DESIGNS OR INFORMATION PROPRIETARY TO PROFESSIONAL COMPONENTS LTD. BY ACCEPTANCE OF REPRODUCTIONS, RECIPIENTS AGREE TO PROTECT PROFESSIONAL COMPONENTS LTD. RIGHTS AND ARE WARNED AGAINST USE OF THE DOCUMENT FOR ANY PURPOSE OTHER THAN THAT FOR WHICH IT WAS ISSUED.

**SW-05489**

S5 SENTINEL SLIDE

WEIGHT: [6.27lbs] 2.84 kg

SCALE: 1:3

SHEET 1 OF 1

REV: 03